



# JOURNÉES ALIMENTS & SANTÉ

## Health & Food days

# La Rochelle

## 16 and 17 June 2010

*8ème édition*  
8th session

Le rendez-vous international  
des professionnels de la nutrition-santé

The international gathering for  
Health & Food professionals



**Business Meetings**  
Your future partners



**Round Tables  
and Conferences**  
The latest in food and health issues



**Exhibition Centre**  
Expertise and know-how



**Product Trends and  
Innovations Area**  
The leading health & food products



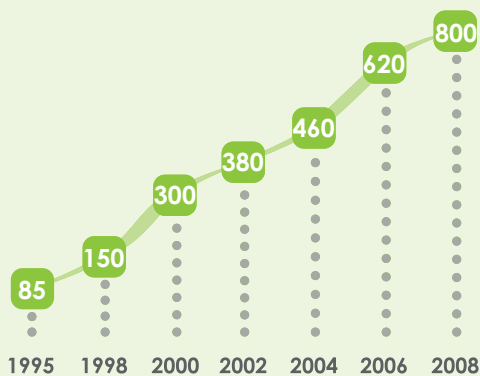
[www.aliments-sante.fr](http://www.aliments-sante.fr)

# "A catalyst for discussion" to benefit innovation and development

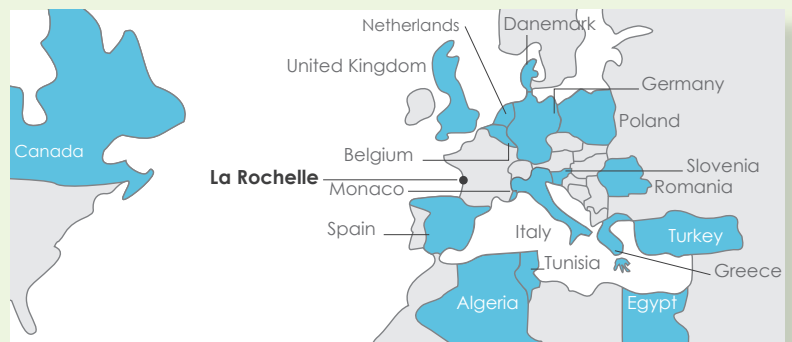
In 1995, the Agri-food CRITT created an event dubbed "Health & Food Days at La Rochelle" to **support** innovative projects and **promote** scientific and technical expertise, both in France and Europe-wide.

After seven editions, the event has become an essential meeting-point for France's Food & Health sector.

15-year growth in the number of participants



2008 international participation



## Proven effectiveness

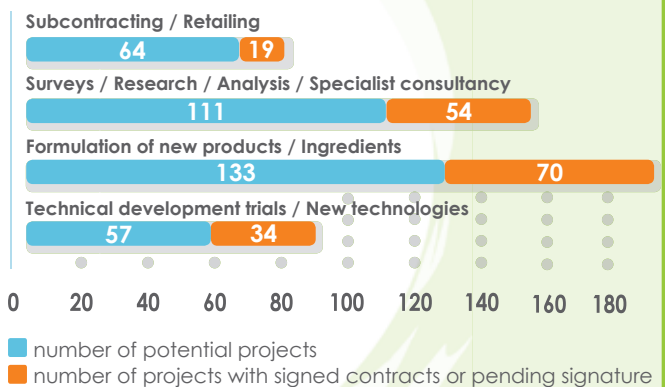
2008 in figures

1,200 offers to meet 920 demands.  
13 meetings per person on average.

3 months after the event

550 projects for cooperation identified, 33% of them lead to concrete partnership agreements.

Projects initiated



# "8th edition of the Health & Food Days"

16 and 17 June 2010, La Rochelle

The event's two days will be based on **four occasions** for discussion



## Business Meetings

To identify future partners: up to twenty confidential meetings can be organised for each participant.



## Round Tables and Conferences

Unique occasions for receiving and sharing information hosted by scientific and technical experts, and by French and international industry players.



## Exhibition Centre

A showcase for products, innovative ingredients, new technologies, services and expertise, organised into themed areas.

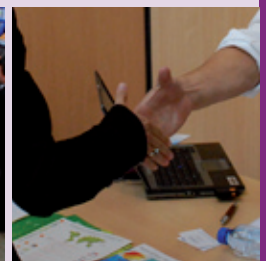
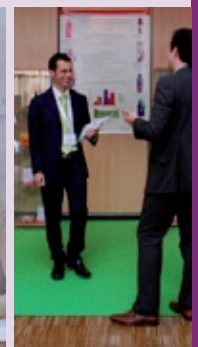
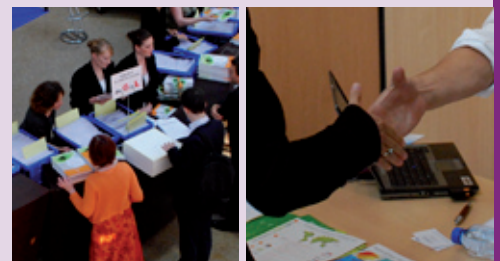


## Product Trends and Innovations Area

Spotlight on food products from around the world in an area dedicated to the latest trends in health and nutrition innovation.

## NEW FEATURES

- **Health & Food Days workshops**  
a place for getting and sharing information via select committees chaired by experts.
- **Decision-makers' corner**  
(retailers and businesses):  
tailor-made business meetings adapted to overseas decision-makers.

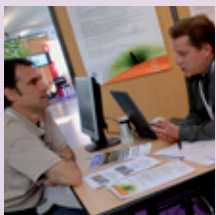


**1,000 participants**

More than **50% food and agriculture businesses**

**25% European and overseas players**

**Large proportion of retailers attending**



## Targets

**The food and agriculture industry for health foods** (good health through naturalness, fruit, vegetables and/or plants, the prevention of illness, well-being, energy and cosmetic foods).

The following industry sectors are also targeted:

- **food supplements**
- **diet foods**
- **cosmetics**
- **pharmaceuticals**
- **animal feed**
- **out-of-home food services**

And also:

- **retailers**
- **service providers:** measurement, control, consultancy
- **packaging suppliers**
- **equipment suppliers**
- **ingredient suppliers**
- **trade press**



## JOURNÉES ALIMENTS & SANTÉ Health & Food days

**Wednesday 16 and Thursday 17 June 2010**

**Espace Congrès  
La Rochelle - France**



### Registration fees:

- Participation in Business Meetings and Round Tables including lunches – dinners – breaks – admission to the Trends and Innovations area:
  - 1st person registered: €650 ex. VAT.
  - As of the 2nd person registered: €450 ex. VAT.
- Presenting your expertise at the Exhibition Centre:  
Price on request depending on how your stand is configured.

### Registration deadline: 21 May 2010.

Register before 31 March 2010 and save €150 on the total cost.

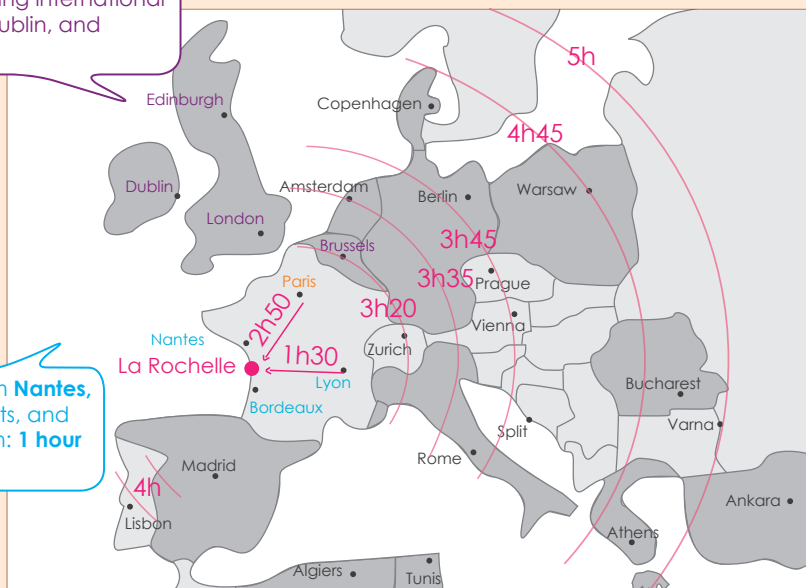
Languages: French, simultaneous interpretation in English for Round Tables. Interpreters on request for Business Meetings.

General information: [www.aliments-sante.fr](http://www.aliments-sante.fr)

## La Rochelle is less than 5 hours from Europe's main capitals

Direct flights (average 1 hour 40 minutes) to La Rochelle from the following international airports: Brussels, London, Dublin, and Edinburgh

Shuttles (bus or plane) from Nantes, Bordeaux, and Lyon airports, and from Poitiers railway station: 1 hour 30 minutes



### Your special contacts:

Elodie Nardese / Julie Thomassery / Fatiha Rahmani  
[contact.jas@crittiaa.com](mailto:contact.jas@crittiaa.com)

Organised by

**Critt** Agro-Alimentaire  
POITOU-CHARENTES

CRIT Agro-Alimentaire Poitou-Charentes  
Rue Charles Tellier - Z.A Technocéan  
Chef de Baie 17000 La Rochelle

Tél. : 33 (0) 5 46 44 84 75 – Fax : 33 (0) 5 46 50 48 87

### Financial partners



### In cooperation with



### Special technical partners

